



Legacy Rig 19  
CAPACITY 12,500' with 4-1/2"

---

**DRAWWORKS**

National 610-M 750HP with 1-1/8" Line

**POWER**

(2) Detroit Series 60 535HP Each

**TORQUE CONVERTORS**

(2) National C-195-100

**AUXILIARY BRAKE**

Parmac V-80

**MAST**

RS&S 141'H x 18'W 450,000 SHL on 10-1-1/8" Lines  
2014 CAT III Inspection

**SUBSTRUCTURE**

DSI - 2 Box on Box 18'H x 24'W 42'L  
2014 CAT III Inspection

**CATWALK**

20"H x 8'W 50'L

**GENERATOR HOUSE**

(2) - 455KW p/b (2) Cat C-15 Engines  
(2) Palatek 30D Screw 30HP

**MUD PUMPS**

(2) RS F-1000 1000HP Each  
(2) 5" x 6" Charge Pumps 50HP Ea. Mounted On Pumps

**POWER**

(2) Detroit 12V2000 900HP Each

**TRANSMISSIONS**

(2) Allison 8962 Automatic

**POWER SWIVEL**

Venturetech XK-250 250 Ton  
w/ HPU p/b CAT C-18 630HP Engine  
w/ Tesco Grabber Box f/ 3" Thru 8" T.J.s (Dec. 2014)

**TRAVELING EQUIPMENT**

Block: Brewster 250 Ton Block/Hook combo  
Hook: B.J. 6250 250 Ton Hook

**ROTARY TABLE**

CZECH C-275 27-1/2"

**CLOSING UNIT**

Chiles C16011ST50 5 Station 120 Gallon

**HOUSES & TANKS**

Top Top Doghouse 8H' x 10'W x 30'L  
Crew Change/Parts House  
Diesel Fuel Tank (10,000 Gal.) 2-Pumps  
Water Tank (450 Bbl.) 2-Pumps  
Ameritech Pusher House 12'W x 48'L (skidded)  
Ameritech Crew Housing 13'W x 52'L (skidded)

**MUD SYSTEM**

2 Tank - 650 Bbl. w/ 75 Bbl. Premix

**SOLIDS CONTROL EQUIPMENT**

Pumps: (4) 5" x 6" Centrifugal  
Shakers: Vortex 3000 Duel  
Desander: NA  
Desilter: OWI w/ 8-4" Cones  
Agitators: (4) 15HP Each  
Mud House: 10'5"W x 12'  
Low Pressure Hopper: Yes

**IRON ROUGHNECK**

Blohm-Voss FH 70

**AUXILIARY EQUIPMENT**

Wireline Machine: Five Star  
Deviation Recorder: Rental MD Totco 20 Degree  
Recorder: Rental Pason EDR Base System  
Pipe Spinner: OWI 35C7 Air  
Air Hoist: Ingersoll-Rand K5  
Hyd. Hoist: Braden PD12  
Hyd. HPU: GFP w/ (2) Pumps  
Spool Skid:

**TUBULARS**

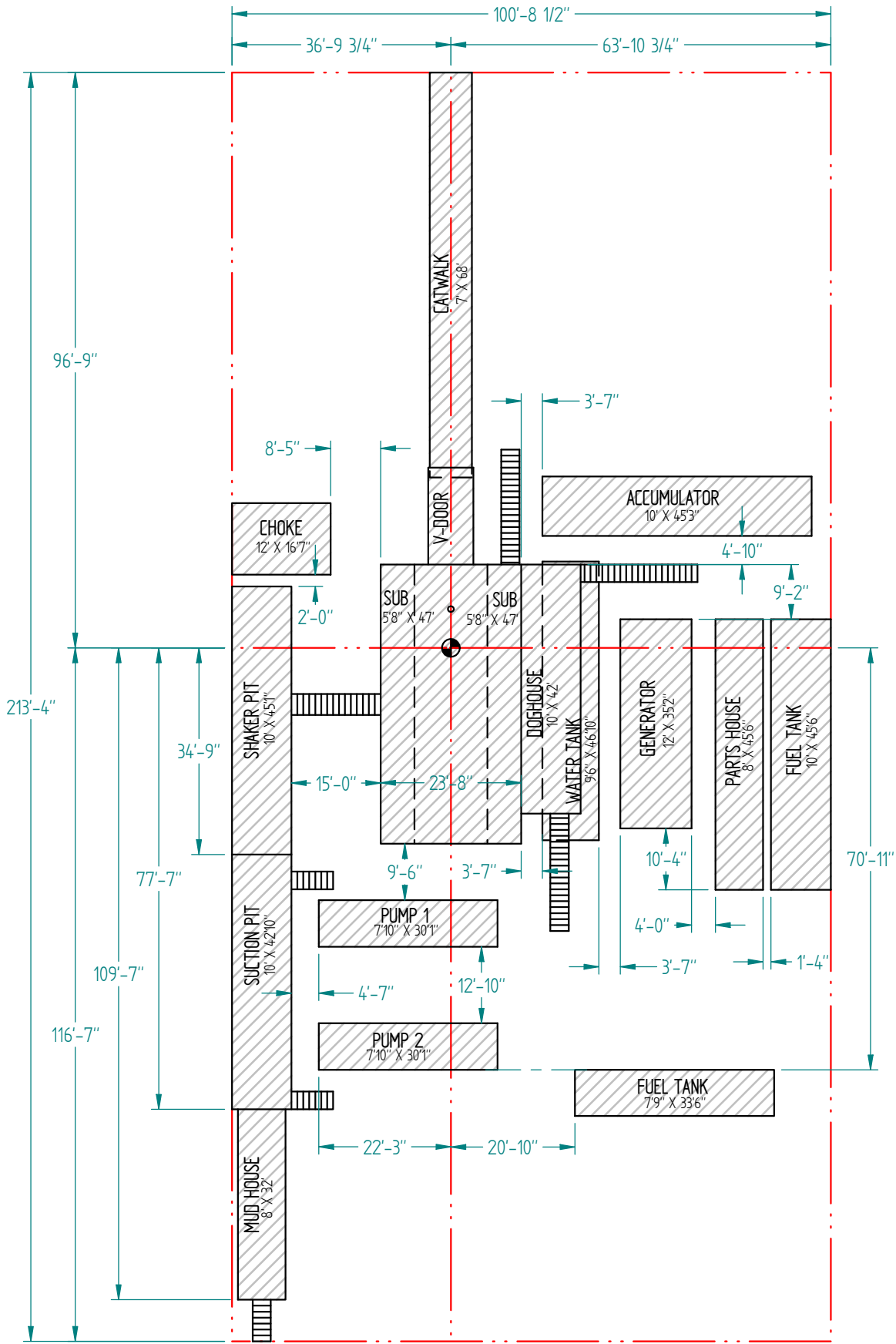
Drill Pipe: 4-1/2" 16.60# G-105 Double WB  
Drill Collars: 6-1/4" x 2-1/4" 92#  
Drill Collars: 8" (Avail. Upon Request)  
Weight Pipe: 4-1/2" x 2-7/8" 42#

**BOP EQUIPMENT**

DOUBLE: HORN LWS 11" x 5000PSI  
ANNULAR: HORN LWS 11" x 5000PSI

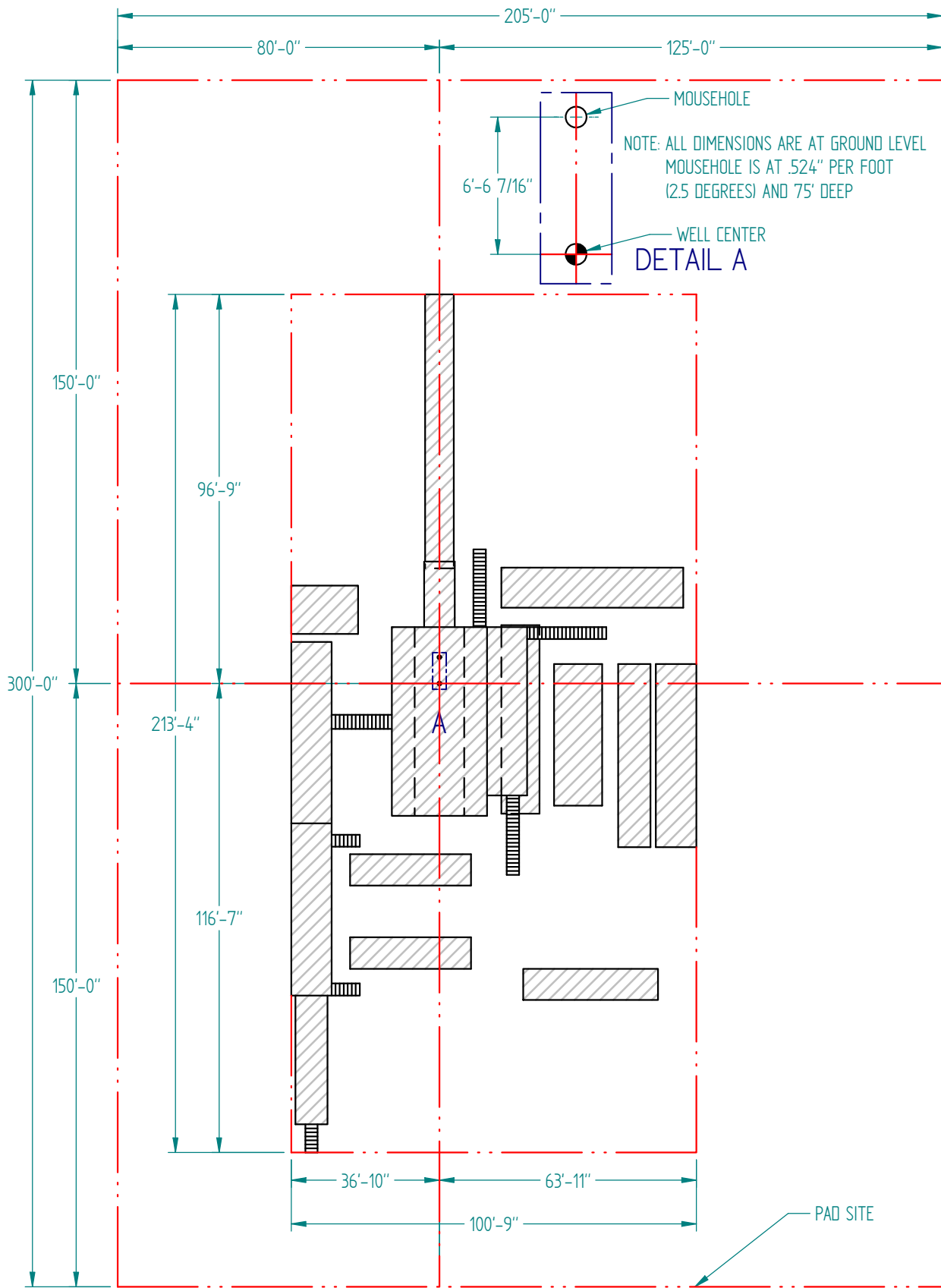
**CHOKE MANIFOLD**

4" x 2" 5000 PSI



RIG 19





RIG19

